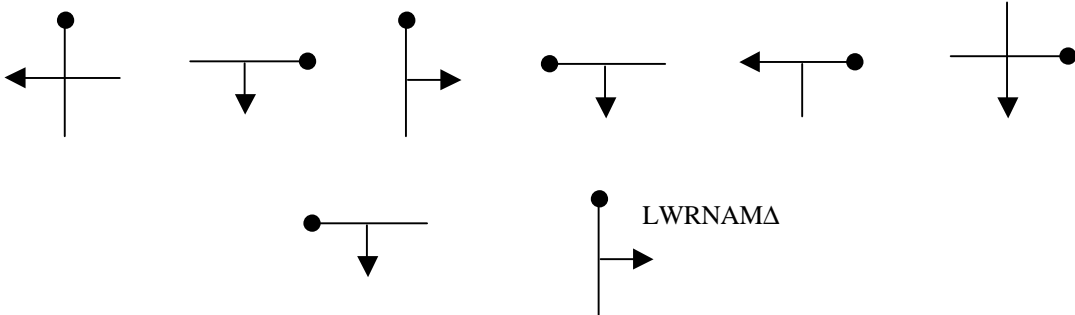


# Semi-Expert TTC2

Semi-Expert / Expert / Master

TTC2 at NNE 490½ 278½ to TC4  
via TC3  
Standard sections – Coloured Roads Only



# Semi-Expert TC4

Semi-Expert / Expert

TC4 at SW 518½ 221¾ to TC7a  
via TC5 and TC6  
Standard sections – Will Use Whites

4	52	23	GW TR	ML
53	23	22	GW LWRNAMΔ	54
22	55	5	55	23
24	55	25	56	6
25	GW	24	23	56
GW	22	56	7	56

TC7a and TC7b are at the same location and form a lateness recovery section of 5 minutes

**Semi-Expert  
TC7b**

---

Semi-Expert / Expert

TC7b at NE 560<sup>1</sup>/<sub>2</sub> 216<sup>1</sup>/<sub>2</sub> to TC10  
via TC8 and TC9  
Standard sections – Coloured Roads Only

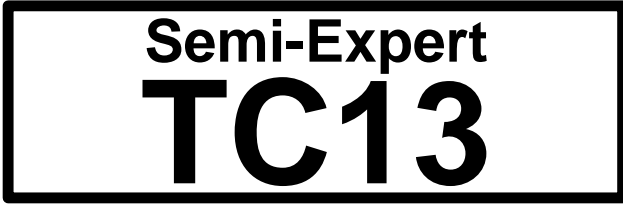
56 55 21 54 20 54 19 55 H o  
19 56 57 20 n p t 58 59 21

<p><b>Semi-Expert</b>  <b>TC10</b></p>
--

Semi-Expert

TC10 at SSW 594¼ 204½ to TC13  
 via TC11 and TC12  
 Standard sections – Will Use Whites

MR (white)	TL	TR (GW)	MR (GW)	TL (missing white), LWR Trees, follow arrows
TR (missing white)	MR (white)	TR	TL (XR)	ML
MR	ML (white)	ML (white)	TR (onto white at XR)	TR
TL (GW)	MR (white)	TR	MR	TL (missing white)



---

Semi-Expert / Expert

TC13 at SSW 597 268 to TC14

Standard section – Coloured Roads Only

276027616226262728

GW at 1st junction

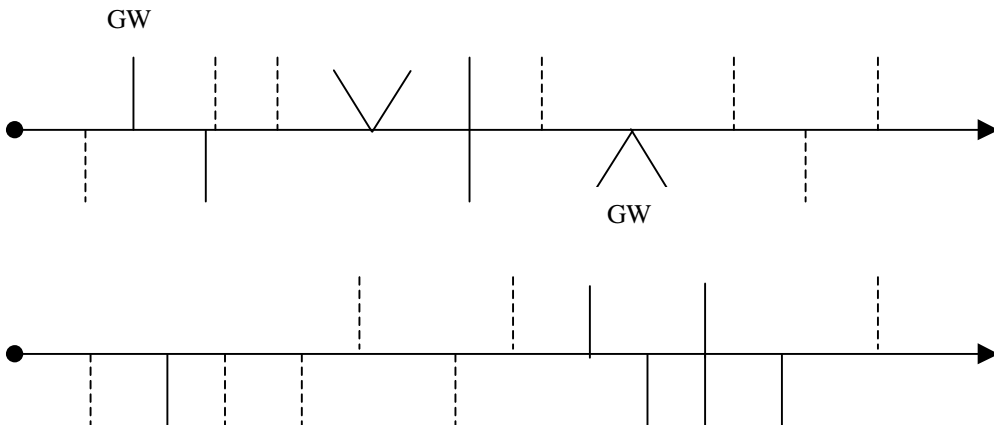
LWRNAMΔ at 3rd & 4th junctions

# Semi-Expert TC14

Semi-Expert / Expert

TC14 at SSW 626 275¾ to TC16  
via TC15  
Standard sections – Coloured Roads Only

Whites Shown In Navigation as dotted lines



**Semi-Expert  
TC16**

---

Semi-Expert

TC16 at SSW  $644\frac{1}{4}$   $251\frac{3}{4}$  to TC18a  
via TC17  
Standard sections – Coloured Roads Only

Depart junctions on these bearings:

192°

100°

095°

144°

155° (GW)

130°

276°

TC18a and TC18b are the same location and form a lateness recovery section of 5 minutes

# Semi-Expert TC18b

Semi-Expert

TC18b at ESE 663 194 to TC20  
via TC19

TC18b to TC20 Standard sections – Coloured Roads Only

Go via:

E1 B3 D2 A2 C5 E4 C1 A4 B5 C3 D3

	1	2	3	4	5
A					
B					
C					
D					
E					

L? = Long Way Round Not As Map Triangle  
GW = Give Way

**Semi-Expert  
TC20**

---

Semi-Expert

TC20 at ESE 636 187¾ to TC21  
Standard section – Coloured Roads Only

MR SO(XR) ML ML MR SO(XR)

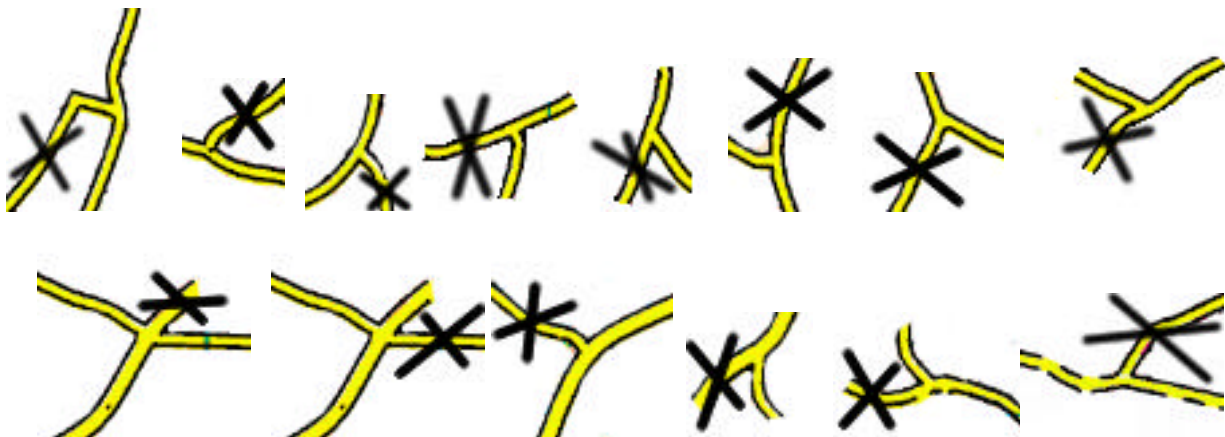
ML SO(5way, GW & LWRNAM?) Shepherds

# Semi-Expert TC21

Semi-Expert / Expert / Master

TC21 at ENE 578 188 to TC23  
via TC22

Standard sections – Coloured Roads Only



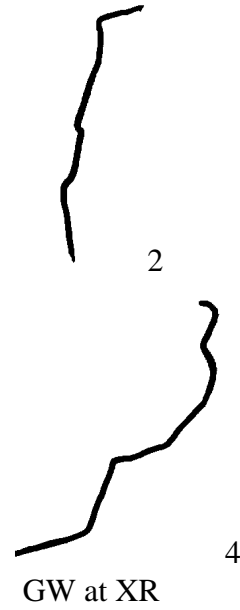
From TC23 Non-competitive to petrol via pre-plot route (given in pre-start instructions)  
Make up all lateness

Then via pre-plot route to MTC24 at W 577¾ 080¾  
Please do not arrive at MTC24 more than 5 minutes before your due time

# Semi-Expert MTC24

Semi-Expert

MTC24 at W 577¾ 080¾ to TC26  
via TC25  
Standard sections – Coloured Roads Only



# Semi-Expert TC26

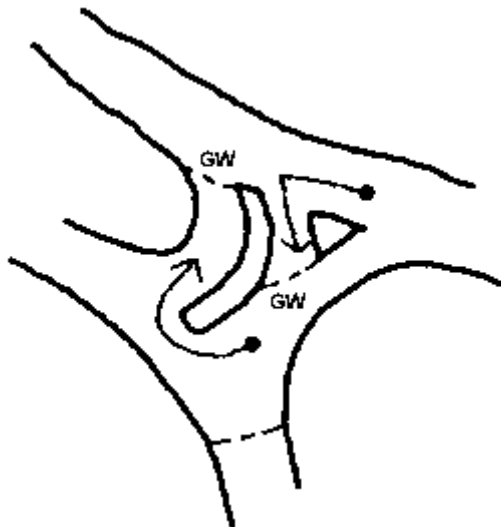
Semi-Expert / Expert

TC26 at E 626¼ 082½ to TC28  
via TC27  
Standard sections – CRO

Straight-line distances between junctions:

	525m (LWRNAMΔ, see diagram)	650m	325m	1375m
1825m	(LWRNAMΔ at next 2Y1W)	100m	700m	1325m(GW)
	25m	1450m	1575m(GW)	350m

Diagram of 1st LWRNAMΔ:



<p style="text-align: center;"><b>Semi-Expert</b> <b>TC28</b></p>
---

---

Semi-Expert / Expert / Master

TC28 at WSW 618¾ 152¾ to TC30  
via TC29  
Standard sections – Coloured Roads Only

62	15	63	64
65	14	66	66
13	66	13	67

Go via:

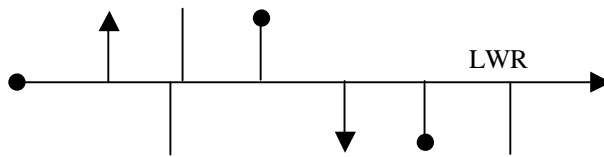
GW at ·57 and last two junctions

LWRNAMΔ at last junction but one and last junction but two

**Semi-Expert  
TC30**

Semi-Expert

TC30 at SSW 666½ 133 to TC32  
via TC31  
Standard sections – Coloured Roads Only



There is an extra map sheet enclosed with this routecard

# Semi-Expert TC32

Semi-Expert

TC32 at SW 691¾ 147 to TC34a  
via TC33  
Standard sections – Will Use Whites

Cross grid lines at the following headings

N	W	GW at next junction	NNE
NNE	W	WNW	NNE
N	N (on white)	ESE	SSE
LWRNAM $\Delta$	LWR <u>AM</u> D	NW	

AM $\Delta$  = As Map Triangle

See extra map sheet enclosed in the envelope for TC30

TC34a and TC34b are the same location and form a lateness recovery section of 10 minutes

**Semi-Expert**  
**TC34b**

---

Semi-Expert / Expert / Master

TC34b at S 682 194 to TTC36 at S 676½ 229  
via TC35  
TC34b to TC35 Standard section – Coloured Roads Only



TC35 to TTC36 Transport Section – Coloured Roads Only

Take the shortest route to TTC36 at S 676½ 229

Please drive quietly – no lateness penalty applies to this section

There is an extra map sheet enclosed with this routecard



---

Semi-Expert / Expert

TTC36 at S 676¼ 229 to TC38  
via TC37  
Standard sections – Coloured Roads Only

> ·98N < ·169S(LWRNAMΔ) GW at next junction um WSW·164

See extra map sheet enclosed in the envelope for TC34b

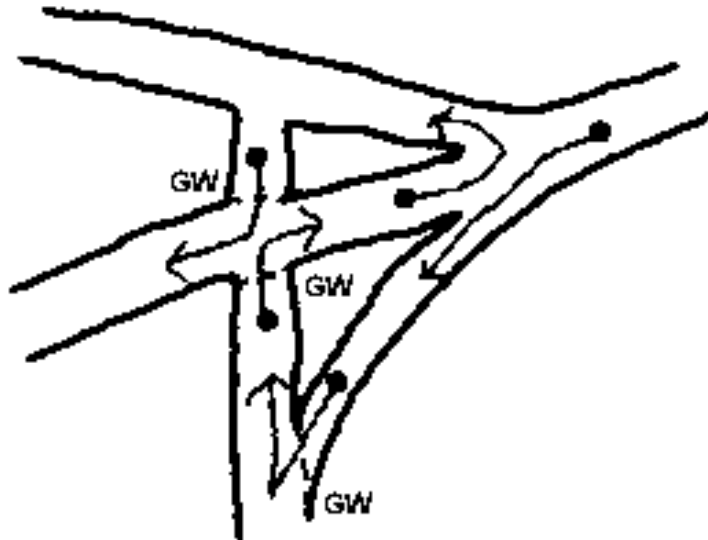
# Semi-Expert TC38

Semi-Expert / Expert

TC38 at WSW 694 264 to TC39  
Standard section – Coloured Roads Only

T cottages

GW at 2nd junction  
At the 3<sup>rd</sup> junction:



See extra map sheet enclosed in the envelope for TC34b

**Semi-Expert  
TC39**

---

Semi-Expert

TC39 at WSW 717 250½ to TC40 at W 709 276½  
Standard sections – Coloured Roads Only

7125      7025      7026      7126      7026      7126      7127      7027      7127

Go via GW at:

SE 715 257¼

SW 716¼ 273¼

SSE 708¼ 276¼

Also GW at all crossroads

See extra map sheet enclosed in the envelope for TC34b

<p style="text-align: center;"><b>Semi-Expert</b> <b>TC40</b></p>
---

Semi-Expert

TC40 at W 709 276½ to TC42  
via TC41  
Standard sections – Coloured Roads Only

NE	SSW(GW)	SW(LWRNAMΔ)	SSW(LWRNAMΔ)	SW(LWRNAMΔ)
WNW	ENE	NW(GW)	WSW	NW
SW	NNW			

See extra map sheet enclosed in the envelope for TC34b

**Semi-Expert  
TC42**

---

Semi-Expert

TC42 at SSE 668¼ 282¼ to TC43  
Standard sections – Coloured Roads Only

1000m      825m      800m      800m

GW at:  
3<sup>rd</sup> junction

LWRNAMΔ at:  
1<sup>st</sup> and 3<sup>rd</sup> junctions

# Semi-Expert TC43

Semi-Expert / Expert / Master

TC43 at WNW 678 293 to TC44  
Standard sections – Will Use Whites

68

30

68

31

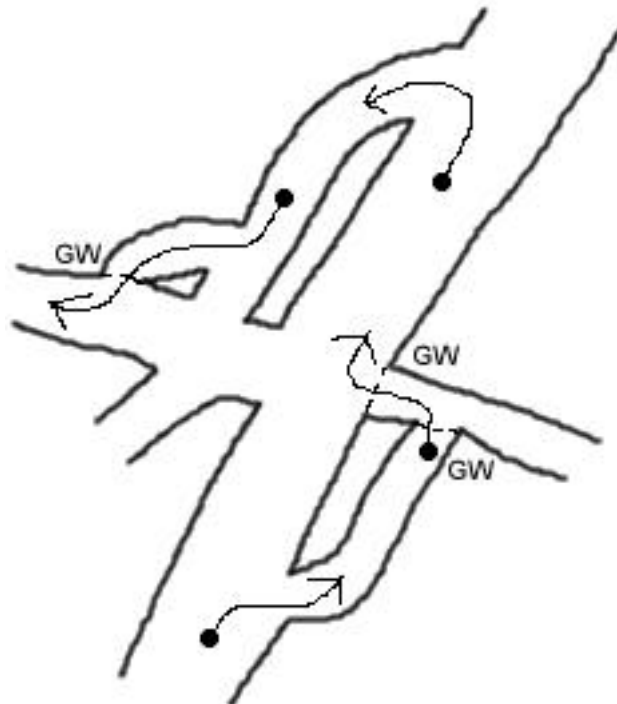
32

32

67

32

In 6830, follow the diagram:



**Semi-Expert  
TC44**

---

Semi-Expert

TC44 at S 665 323 to TC46  
via TC45  
Standard sections – Coloured Roads Only

10ths crossing grid lines

5<sup>1</sup>/<sub>2</sub>

8<sup>3</sup>/<sub>4</sub>

2

4<sup>3</sup>/<sub>4</sub>

9<sup>1</sup>/<sub>4</sub>

9

GW at:

1<sup>st</sup>, 3<sup>rd</sup> and 4<sup>th</sup> junctions

Go via: t r o r

# Semi-Expert TC46

---

Semi-Expert / Expert / Master

TC46 at ENE 626¾ 340½ to MTC48 at ENE 592 353¾  
via TC47

Standard sections – Coloured Roads Only

L R T R T T L L L B B L L

From MTC48 Proceed **Non-Competitive** to Finish / breakfast

Turn Right onto the B3046

Turn Left onto yellow at Northington in GS 5637

Turn Right onto A33 in GS 5136

Turn Left onto yellow in GS 5237

To the Half Moon and Spread Eagle at 516¾389

Please park quietly / sensibly (the field may be used dependent on weather conditions)